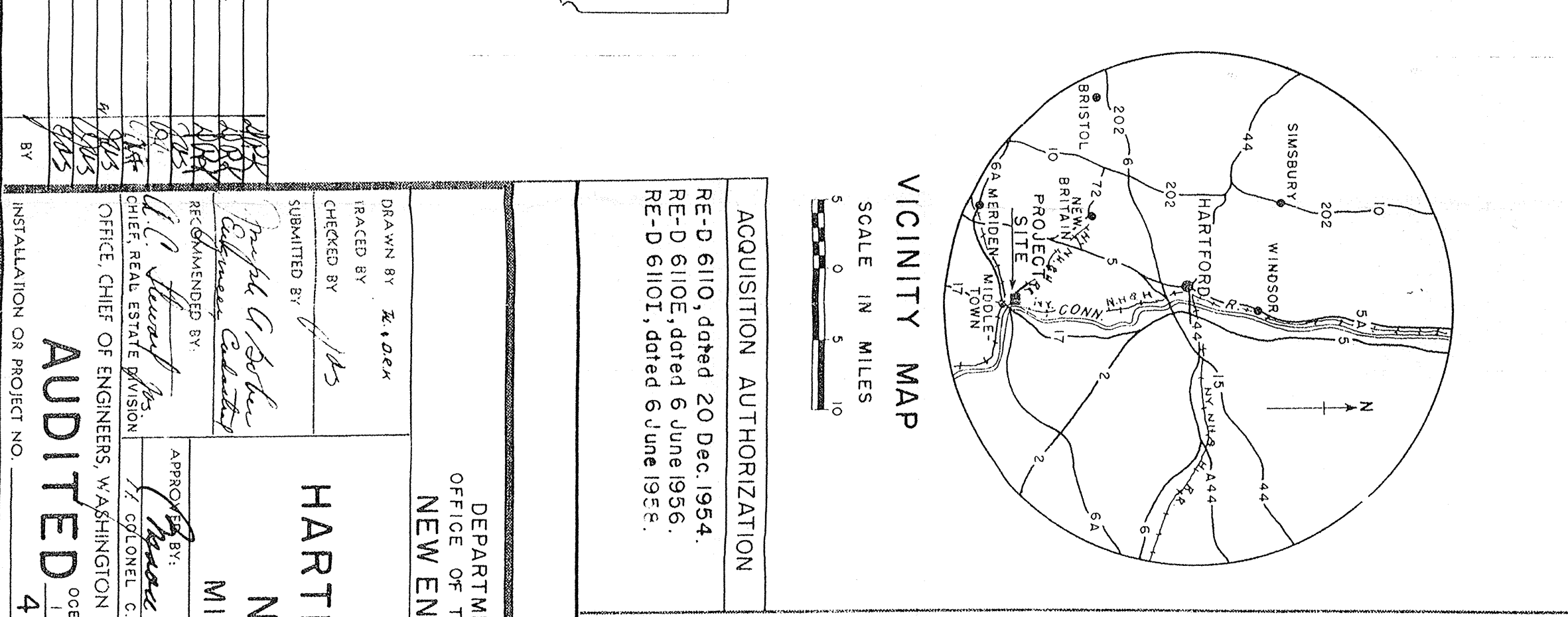
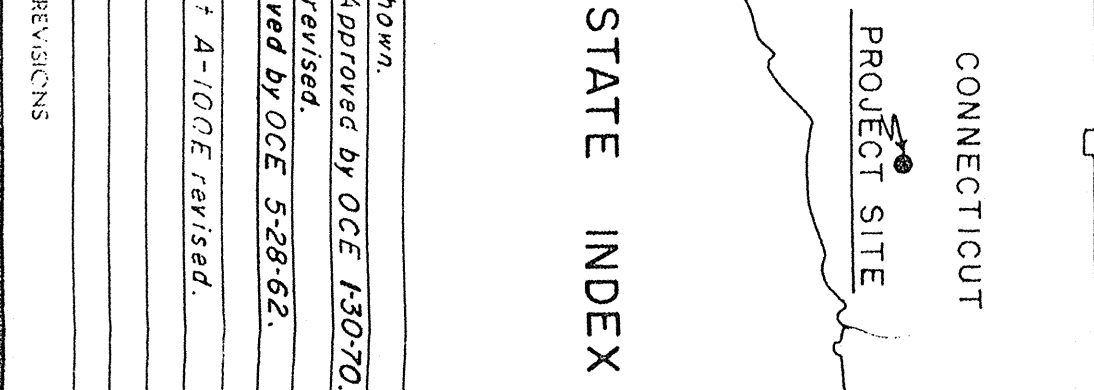
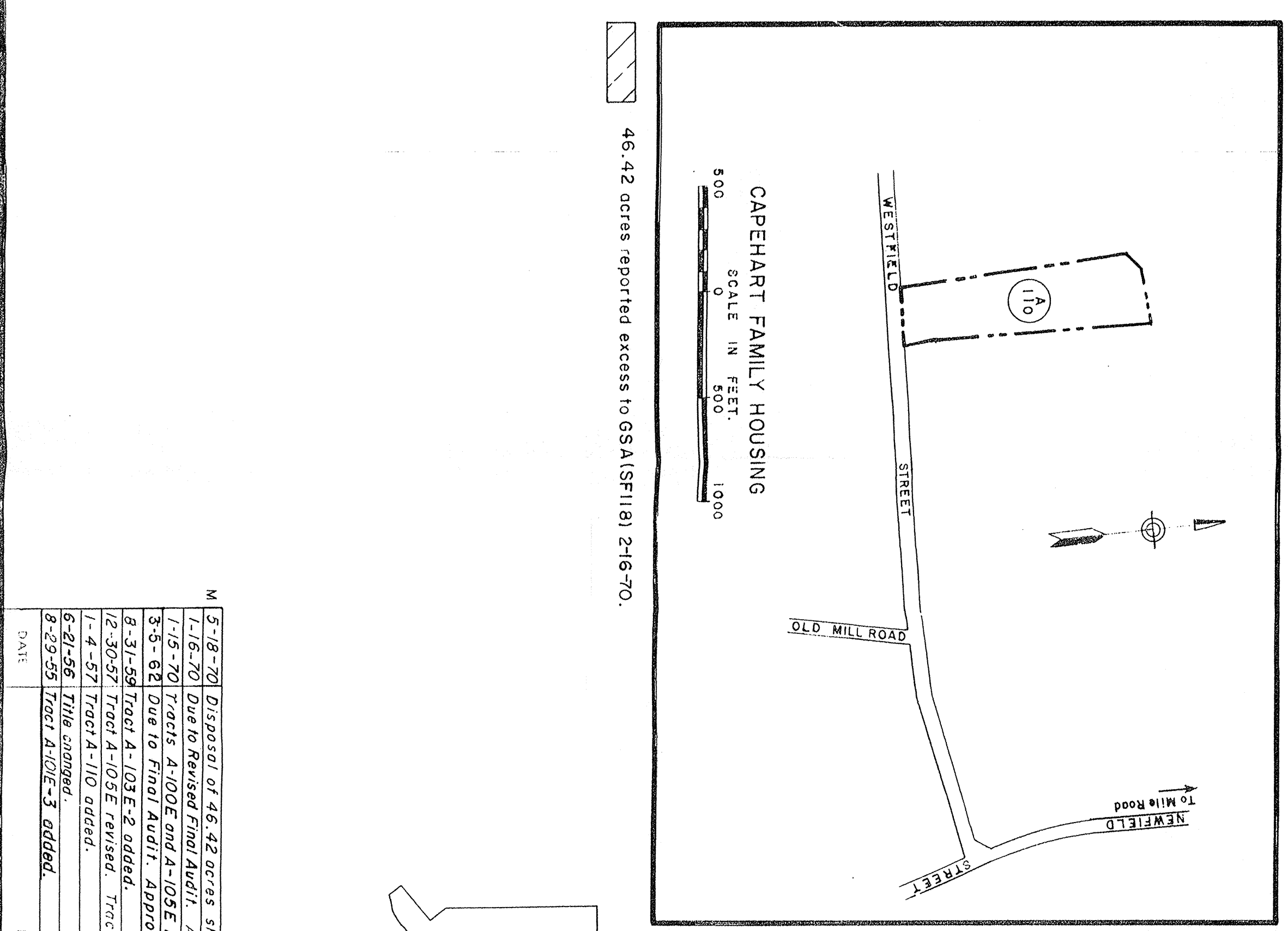


NOTE:  
 M.T.R. E1,225.5 N 281,132.00  
 T.T.A. E1 E1,225.5 N 281,132.00  
 A.C.O.R. E1,225.5 N 281,132.00  
 C.V. E1 E1,225.5 N 281,132.00  
 COORDINATES BASED ON CONNECTICUT PLANE COORDINATE SYSTEM.

NOTE:  
 The boundary of this installation was compiled from deed descriptions.

E 618,000

E 618,000



**FOR AUDIT ONLY  
 DO NOT REMOVE**

TRACT NO.	LAND OWNER	FEE	ACREAGE	EASEMENT/LEASED PERMIT	REMARKS
A-100	Walter Wisk	2.10			D/T filed 9-10-55.
A-100E	Walter Wisk		4.15		Perp. masking easmt. from 9-10-55.
A-101	Leslie A. Wilcox	1.80			D/T filed 9-10-55.
A-101E-1	Leslie A. Wilcox		8.73		Perp. masking easmt. from 9-10-55. address 0177 acre included in tract A-101E-3.
A-101E-2	Leslie A. Wilcox		1.00		Perp. access road & utilities easmt. from 9-10-55.
A-102	Floyd H. Pattie et ux.	4.85			D/T filed 9-10-55.
A-102E-1	Floyd H. Pattie et ux.		0.94		Perp. access road & utilities easmt. from 9-10-55.
A-102E-2	Floyd H. Pattie et ux.		0.17		Perp. line of sight easmt. from 9-10-55.
A-102E-3	Floyd H. Pattie et ux.		1.83		Perp. masking easmt. from 9-10-55.
A-102E-4	Floyd H. Pattie et ux.		1.00		Perp. masking easmt. from 9-10-55.
A-102E-5	Floyd H. Pattie et ux.		2.40		Perp. masking easmt. from 9-10-55.
A-102E-6	Floyd H. Pattie et ux.		0.29		Perp. access road & utilities easmt. from 9-10-55.
A-103E	Joseph J. Petrofsky	1.90			Perp. masking easmt. from 9-10-55.
A-104E	James W. Davidson	1.60			Perp. masking easmt. from 9-10-55.
A-105E	Thomas Kelly	2.80			Perp. masking easmt. from 9-10-55.
A-106E	Valentine J. Coleman et ux.	12.70			D/T filed 9-10-55.
A-107E	Stanley W. Gilbert et ux.	0.25			Perp. safety easmt. from 9-10-55.
A-107E-1	Stanley W. Gilbert et ux.		6.80		Perp. safety easmt. from 9-10-55.
A-108E	James H. Ewald et al.	10.42			D/T filed 9-10-55.
A-109E	Leno B. Padlock et al.	0.35			Perp. safety easmt. from 9-10-55.
A-109E-1	Leno B. Padlock et al.		8.00		Perp. safety easmt. from 9-10-55.
A-109E-2	Joseph J. Petrofsky	7.50			Perp. fire line easmt. from 2-2-56. Capehart Family Housing D/T filed 2-28-57. Perp. sewer drainage easmt. from 12-29-59.
A-110E	Margaret A. Lynch	0.12			

**FINAL PROJECT MAP**

AGENCY: DEPT. OF THE ARMY  
 USING SERVICE, ARMY AIR DEFENSE COMMAND,  
 STATE, CONNECTICUT  
 COUNTY, MIDDLESEX  
 DIVISION, NEW ENGLAND  
 DISTRICT, NEW YORK DISTRICT ON 7-170  
 ARMY AREA FIRST

**LOCATION OF PROJECT**  
 10-MILES S.E. OF HARTFORD  
 IN CROWWELL & MIDDLETOWN

**TRANSPORTATION FACILITIES**  
 RAILROADS, N.Y.N.H. & H. R.R.  
 STATE ROADS, 12

**FEDERAL ROADS**  
 AIR LINES

**ACQUISITION**  
 TOTAL ACRES ACQUIRED 91.23  
 ACRES FEE 39.97  
 ACRES TRANSFERRED  
 ACRES LEASED  
 ACRES LESSER INTERESTS, EAS. 51.28

**DISPOSAL**  
 TOTAL ACRES DISPOSED OF 46.42

**LEGEND**  
 ACRES SOLD  
 ACRES TRANSFERRED  
 ACRES LEASED  
 ACRES LESS. INTS. TERMINATED  
 ACRES REASSIGNED  
 ACRES TO G.S.A. 46.42

EXCEPT FOR THE SPECIAL SYMBOLS SHOWN BELOW, MAP SYMBOLS ARE STANDARD IN ARMY MAP SERVICE TECHNICAL MANUAL NO. 33.  
 RESERVATION LINE  
 TRACT BOUNDARY LINE  
 TRACT NUMBER  
 AVIGATION EASEMENT  
 CONTOUR LINE  
 DISPOSAL

DEPARTMENT OF THE ARMY  
 OFFICE OF THE DIVISION ENGINEER  
 NEW ENGLAND DIVISION

REAL ESTATE  
 HARTFORD DEFENSE AREA  
 NIKE BATTERY 48  
 MILITARY RESERVATION

DATE: JUNE 1955  
 SCALE IN FEET 1:500  
 SHEET 1 OF 1 DRAWING NO. 1165

REVISIONS

NO.	DATE	DESCRIPTION
1	5-18-70	Disposal of 46.42 acres shown.
2	7-16-70	Due to revision from A-101E, approved by OCE 13070.
3	8-5-68	Due to revision from A-101E, approved by OCE 52862.
4	8-31-59	Tract A-101E-2 added, approved by OCE 52862.
5	12-30-57	Tract A-101E revised, Tract A-101E revised.
6	7-4-57	Tract A-101E added.
7	6-21-56	Title change.
8	6-23-55	Tract A-101E-3 added.