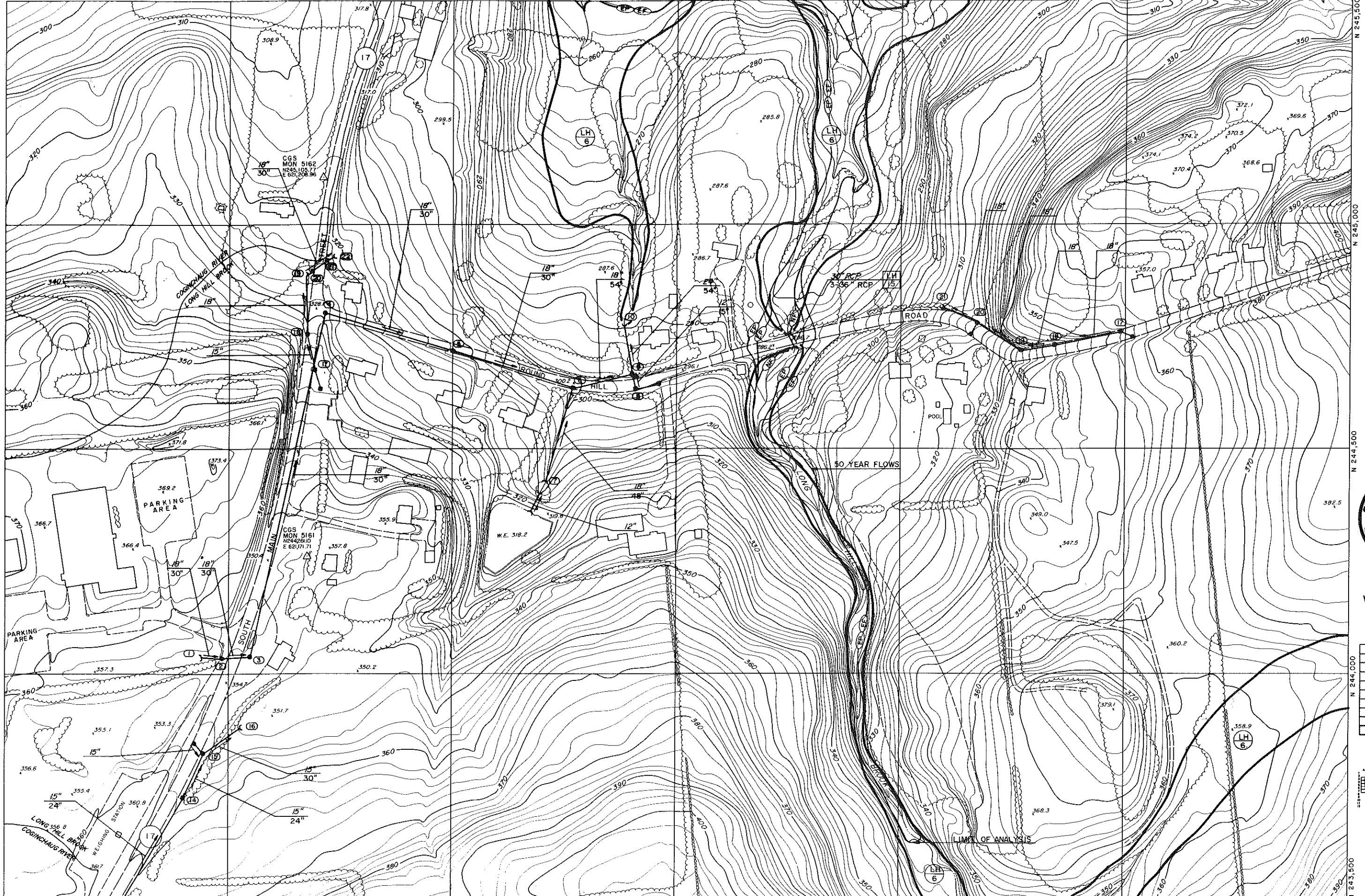


E 620,500 E 621,000 E 621,500 E 622,000 E 622,500 E 623,000 E 623,500

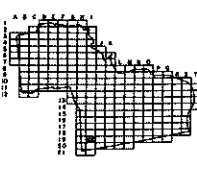


- LEGEND**
- Roads
  - Drives (over 200ft)
  - Railroads
  - Buildings
  - Endwalls and Culverts
  - Catch Basin
  - Manhole
  - Rivers and Streams
  - Fences (cross country)
  - Walls, retaining, stone
  - Trees
  - Swamp and Marsh
  - Lakes and Ponds
  - Contours
  - Depression
  - Spot elevation
  - Control, vertical
  - Control, horizontal
  - Bridges
  - Towers



*Michael J. ...*  
MAYOR

REVISION	DATE	BY



SHEET INDEX

JAMES P. PURCELL ASSOC.  
Glastonbury, Ct.

SHEET NO.

119

MAP COMPILED USING PHOTODIAGRAMMATIC METHODS BY

ANIMAL DATA PRODUCTION ASSOCIATES, INC.  
PERMITS: 12-1  
P.O. BOX 111  
P.O. BOX 111  
P.O. BOX 111

DATE OF PHOTOGRAPHY APRIL 17, 1980

THIS MAP COMPLES WITH OR EXCEEDS NATIONAL MAP ACCURACY STANDARDS.

DAINED CONTOURS ARE SHOWN IN AREAS OBSCURED BY DENSE VEGETATION.  
VERTICAL ACCURACY MAY BE REDUCED.

ORANGE AND WETLANDS INFORMATION PREPARED BY PURCELL ASSOC. 1481

TOPOGRAPHIC MAP OF THE

CITY OF MIDDLETOWN, CONNECTICUT

WITH DRAINAGE SYSTEMS AND INLAND WETLANDS SUPERIMPOSED



CONTOUR INTERVAL 2'  
SCALE 1" = 100'

500 FOOT GRID BASED ON CONNECTICUT RECTANGULAR GRID SYSTEM  
NATIONAL GEODETIC VERTICAL DATUM OF 1929