

17. OTHER NOTABLE FEATURES OF BUILDING OR SITE (interior and/or exterior):

SIGNIFICANCE

Architect: _____ Builder: _____

18. HISTORICAL OR ARCHITECTURAL IMPORTANCE: The origins of Washington Terrace Park may date from the original settlement at Middletown in 1650. It first appears on a map in 1825 as an open space. This West Green was changed from an open common to a landscaped park around 1878. A marble Civil War monument was erected on the west half of the green in 1904 by the 24th Regiment Connecticut Volunteers, Citizens of Middletown, and State of Connecticut. It commemorates those members of the 24th Regiment who fell in the battles of Donaldsonville, Port Hudson, Baten Rouge, and Irish Bend.

A granite obelisk was erected by the City in 1919 as a memorial to the city's World War I dead. This "Soldiers' and Sailors' Monument" stands at the east end of the Park and bears several memorial inscriptions as well as the names of the casualties.

The green is planted with memorial trees dedicated to individual World War I servicemen who were killed in action. These trees are aligned in formal rows which create shaded avenues. These trees and the green serve as an effective buffer between the busy traffic on Rt 66 along the north side of the green and the residences on Washington Terrace.

PHOTOGRAPH

photographer: Roger Sherman
date: 12/77 view: A: to the east; B: to the south
negative on file: A: Roll 8, #32; B: Roll 8, #33

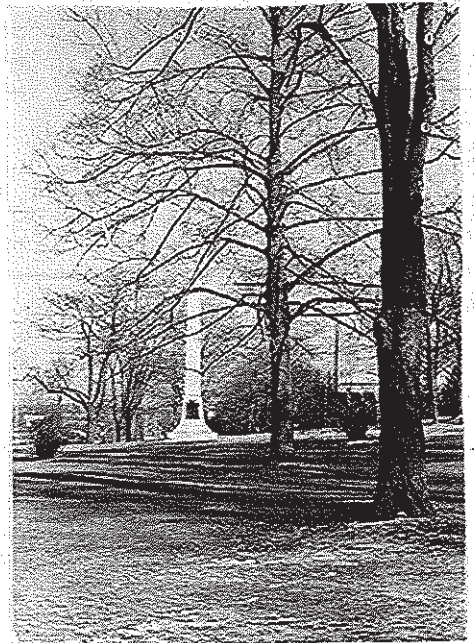
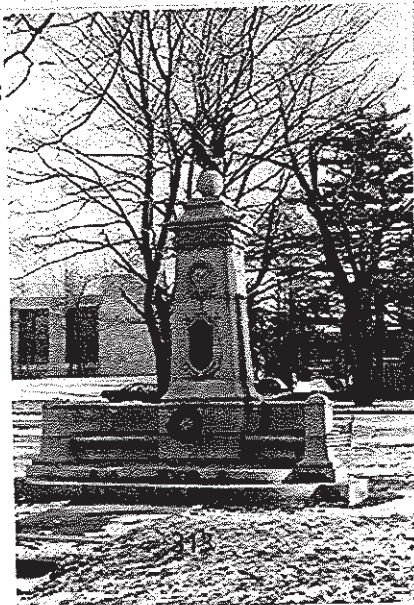
COMPILED BY:

name: John E. Reynolds date: 9/78
organization: Greater Middletown Preservation Trust
address: 27 Washington St., Middletown, Ct. 06457

19. SOURCES: Mayor's Annual Message, 1878; Charter and Revised By-Laws of the City of Middletown (Wm. J. Starr, 1857); 1825 Barnum Map; 1851 Clark Map; 1874 Beers Atlas; 1877 Bailey Map

20. SUBSEQUENT FIELD EVALUATIONS:

B: Civil War Monument



A: World War II Monument

21. THREATS TO BUILDING OR SITE:

none known highways
 renewal private